

INNOSTEEL



CONTACT US

Innosteel Co.,Ltd.

- ☎ 82-55-342-3656(Extension 1: Management Dept, 2: Sales Dept, 3: QA 4: Production Dept)
- ☎ 82-55-342-3681(Sales Dept) 82-55-342-3682(Production Dept)
- 📍 65, Angok-ro 333beon-gil, Hallim-myeon, Gimhae-si, Gyeongsangnam-do, Republic of Korea, 50852



**INNO
STEEL**

<http://innosteel.kr>

CONTENT

1	CEO Massage	01
2	Company introduction	02
3	Brief History	03
4	Corporate value. corporate goal	04
5	SMART+system (Product delivery guarantee system)	05
6	Quality Management System 5P+A	06
7	Manufacturing Process	07
8	Main Products.	
	Ship Engine Part	08
	Industrial Machinery	08-1
	Nuclear Power Generation Facilities	08-2
	(Wind Power Equipment parts)	
9	Manufacture Facilities	09
10	Inspection Equipment	10
11	Certificate	11

CEO Message

Since its establishment in 1996, it has been producing large ship engine parts, petrochemical plant parts, industrial machinery parts, nuclear power generation, and high-pressure forging valve used for thermal power generation. We are doing our best to become a leader in the forging industry based on this high-quality production technology .

With constant technological development and rapid introduction of advanced technologies, we are expanding our business to various fields such as shipbuilding, plants, wind power, and industrial equipment. It is the only policy for companies that do their best with firm and unwavering beliefs that put customers and quality first to keep their promises with customers.

Under the values of dream, future, and happiness, all employees of Innosteel Co., Ltd pledge to strive to become the best and more effective company in their respective fields. In addition, we will strive to become a dynamic and future-oriented company that adapts to rapidly changing markets. We meet the needs of our customers more quickly and appropriately than any other company.

CEO of Innosteel Co., Ltd.

Kim Woo Seok

Yoon Jin A

COMPANY INTRODUCTION

From petrochemical plant parts to industrial machinery parts, large ship engine parts, and nuclear/thermal power generation parts, InnoSteel Co., Ltd. has been producing products with the best efforts to meet customer needs with the latest facilities, and we are creating a company that does its best with a firm and unwavering belief that puts customer quality first.

By thinking about the future environment (Eco) and complying with governance, InnoSteel Co., Ltd. will have corporate social responsibility (CSR) and meet the needs of customers more quickly and appropriately than any other company.



BRIEF HISTORY

- **1996** Established as Gyeongseong Co., Ltd
- **2001** Installed a 1500-ton press
- **2005** ISO9001/20000 certification obtained
- **2006** Installed of 2500 tons of press
- **2007** Renamed Dasan Materials Co., Ltd
Additional supply of Hyundai Heavy Industries (PROPELLER SHAFT, PISTON ROD)
STX ENPACO (Piston Rod, Cylinder Cover) Registration/Supply
hyundai-rotem(MAIN GEAR, ADJSUT SCREW, PINION, MAIN SHAFT, ...)
- **2008** ISO14001 / 18001 certification obtained
Hyundai WIA company registration and PRESS parts supply Registration/Supply
- **2010** Urim Machinery (Industrial Engine Parts Supply - GEAR, PINION)
- **2012** Forging Valve Supply - Domestic, Overseas (VELAN), ICL (PK VALVE)
Samsin Co., Ltd. (supplied nuclear power & thermal forging valve)
- **2013** Renamed Innosteel Co., Ltd.
- **2020** Certification of companies specializing in root technology
- **2021** Bring in Smart Factory (MES)
- **2023** Certification of companies specializing in materials, parts and equipment)
- **2024** Certification of establishment of a department dedicated to R&D

CORPORATE VALUE



VISION

Let's do create a company where executives and employees are happy by achieving 100 million dollar in sales.



MISSION

As a company, let's become a company that contributes to society by making better products with corporate social responsibility (CSR).

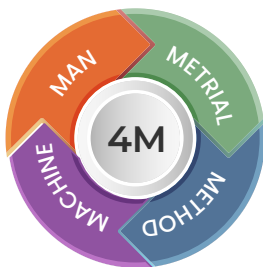


SLOGAN

Let's do Produce the best products with the best equipment, best materials, and best people.

CORPORATE GOAL

OPTIMIZATION OF 4M



DELIVERY DATE COMPLIANCE



EXPANDING ECO FRIENDLINESS



GOVERNANCE COMPLIANCE



SMART+SYSTEM

(PRODUCT DELIVERY GUARANTEE SYSTEM)



SPECIFIC DESIGN PLAN

We check our customer needs

MONITORING

Provides continuous monitoring of progress.

ACHIEVE CUSTOMER SATISFACTION

We will Achieve customer satisfaction through strict quality control.

REALISTIC PARTNER

When choosing a customer's goal, we can be your Realistic partner.

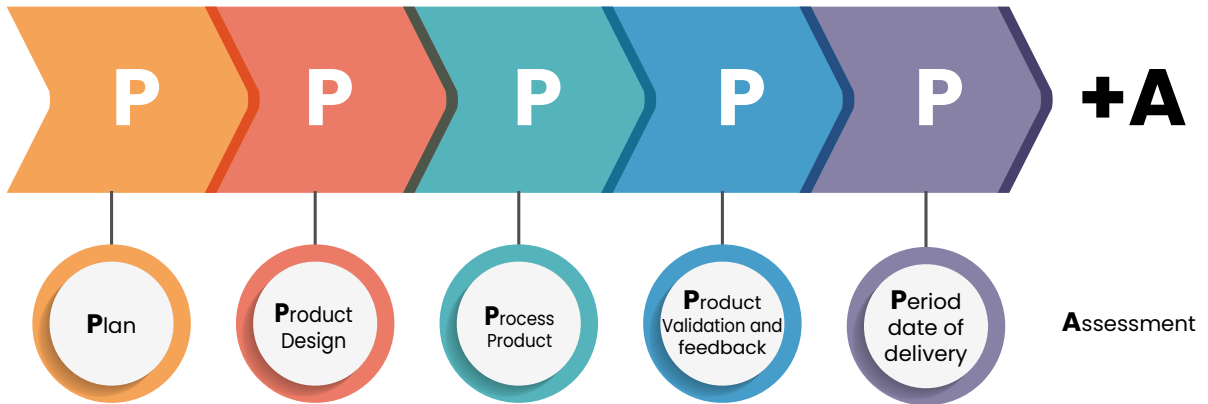
TIME

Based on the customer's trust, we ship the product on the exact Time delivery date.

ASSESSMENT

A comprehensive final inspection process

QUALITY MANAGEMENT SYSTEM 5P+A



We continue to communicate with customers and consider product quality as our top priority.

We guarantee perfect quality through strict **5P+A** quality control.

PLAN

Check customer needs

PRODUCT DESIGN

Check program simulation

PROCESS PRODUCT

Product manufacturing process

PRODUCT VERIFICATION

Evaluation of product design

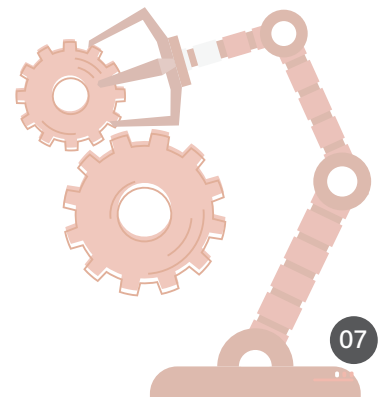
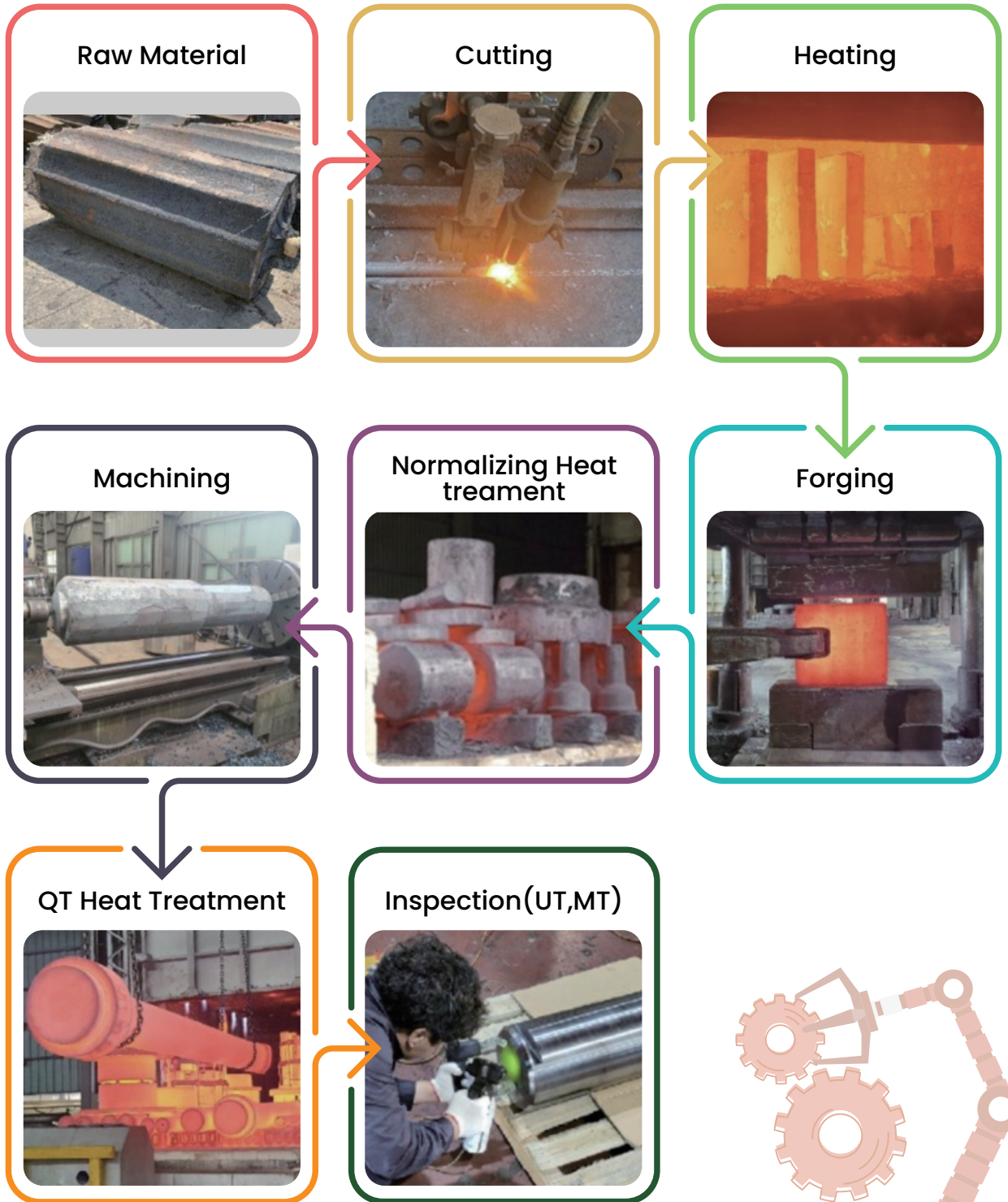
PERIOD DATE OF DELIVERY

Confirmation of the exact delivery date

ASSESSMENT

A comprehensive final inspection process

MANUFACTURING PROCESS



Products List1

Ship Engine Parts



Rudder Stock



Drive Shaft



GearWheel



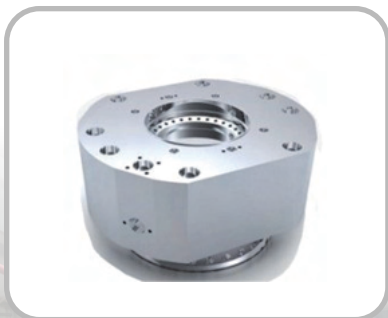
Propeller Shaft



Intermediate Shaft



Piston Rod



Cylinder Cover



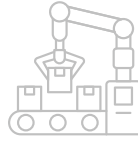
Piston Crown



Cross Head Pin

Products List2

Industrial Machinery Parts



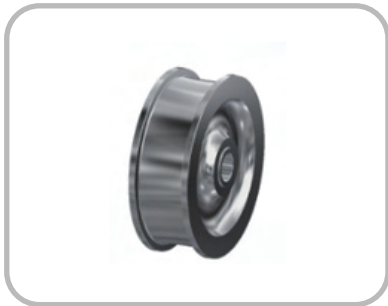
PIPE



Flanged Shaft



Bit



Roller



Table Roller



CrankShaft



Hook



Workroll



Wheel



Products List3

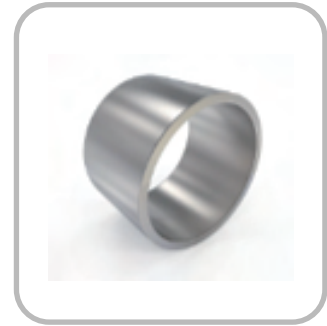
Nuclear Power Generation Facilities



VALVE



Y-TYPE VALVE



Forged Shell



BONNET



VALVE

Products List4

Wind Power Equipment Parts



MANUFACTURE FACILITIES

09



Forklift+Manipulator



Forklift



Heat treating furnace



heating



1500 TON PRESS



2500 TON PRESS



3500 TON PRESS

EQUIPMENT	CAPABILITY	QUANTITY	EQUIPMENT	CAPABILITY	EQUIPMENT
HEATING FURNACE	50TON	4	CRANE	30TON	2
	30TON	1		20TON	1
	80TON	1		15TON	1
HEAT TREATMENT FURNACE	60TON	2		10TON	5
OIL HYDRAULIC PRESS	2500TON	1		5TON	1
	1500TON	1	FORKLIFT	42TON	1
	3500TON	1		25TON	3
BAND SAW	650MM	2		18TON	2
	500MM	1		16TON	1
	1200MM	1	15TON	1	
	900MM	3	10TON	1	

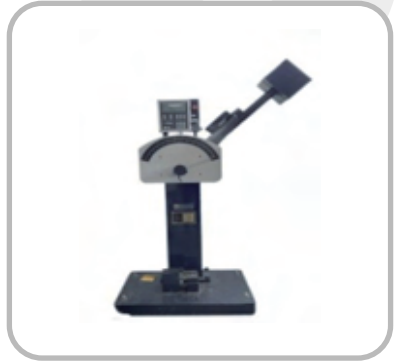
INSPECTION EQUIPMENT



universal Tester



Scientific component analyzer



Charpy impact Tester



Brinell hardness Tester



PMI Equipment



microscope



Marking Machine



Grinding M/C for test Piece



Hardness Tester

